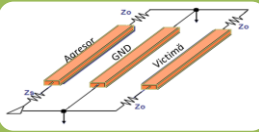
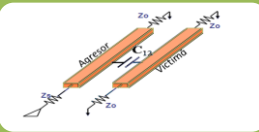


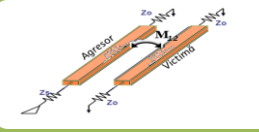
5. Cuplaje parazite



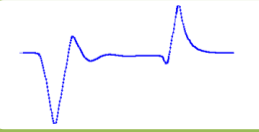
Cuplajul prin impedanță comună



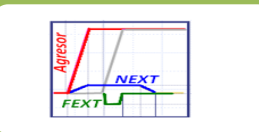
Cuplajul în câmp electric



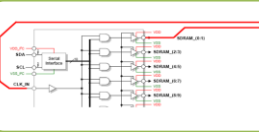
Cuplajul în câmp magnetic



APLICAȚIE: Analiza cuplajelor la linii scurte



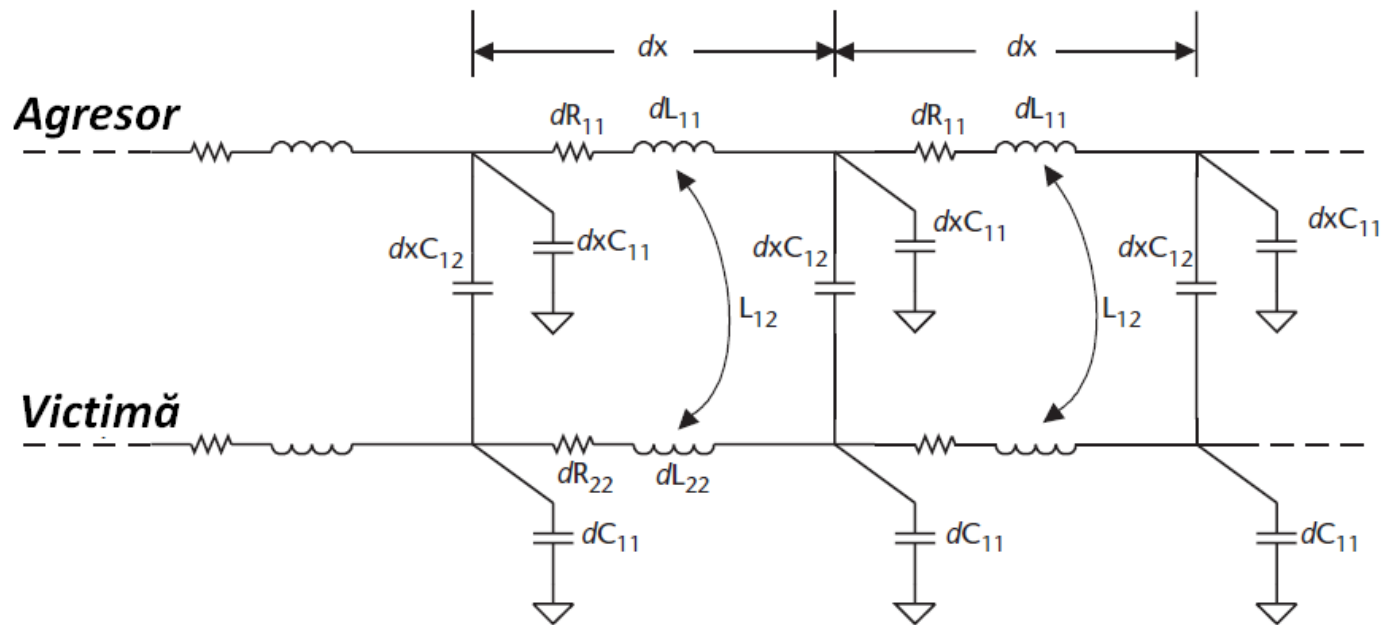
Cuplajul între linii lungi



APLICAȚIE: Analiza cuplajelor la linii lungi

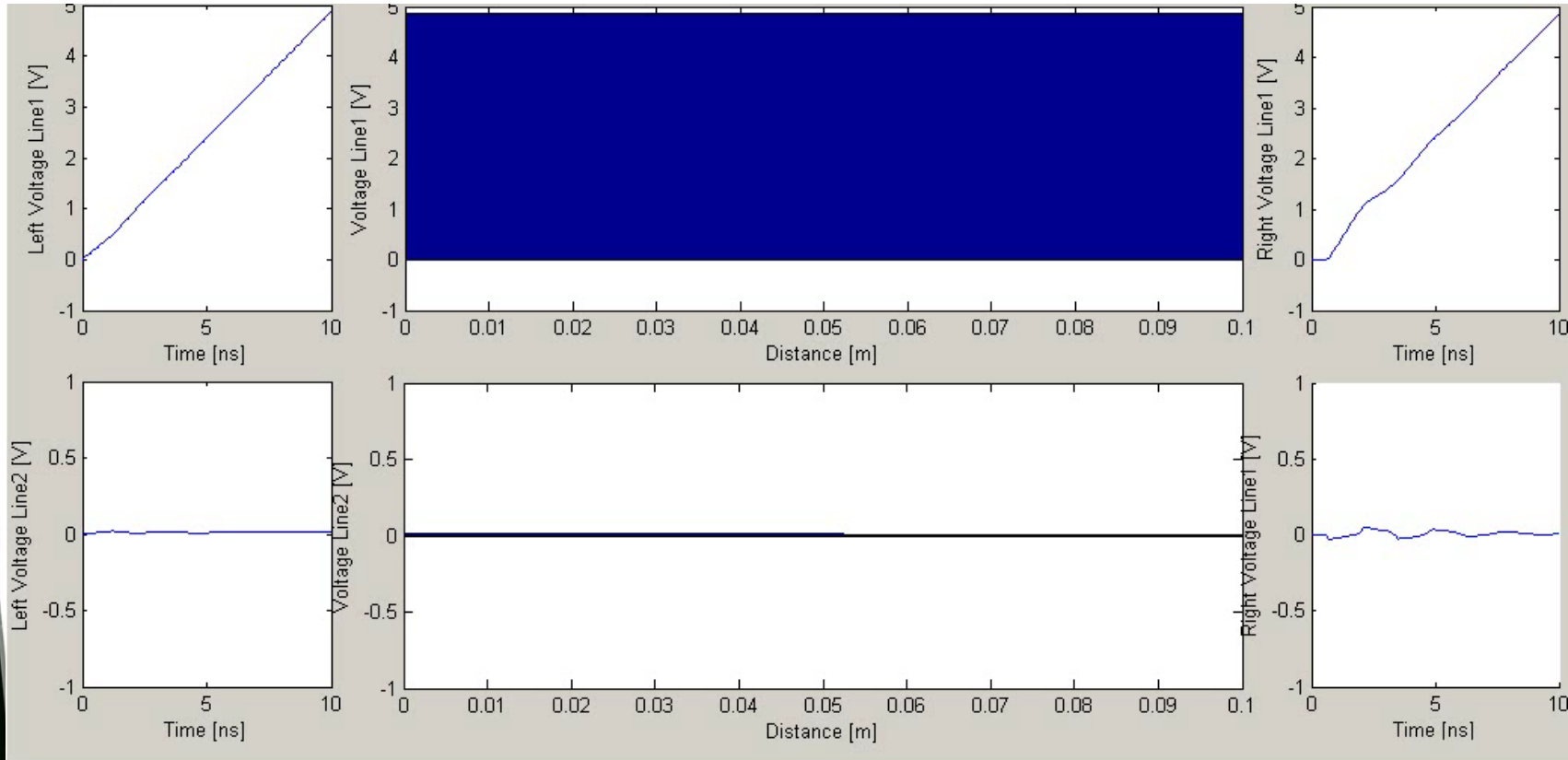
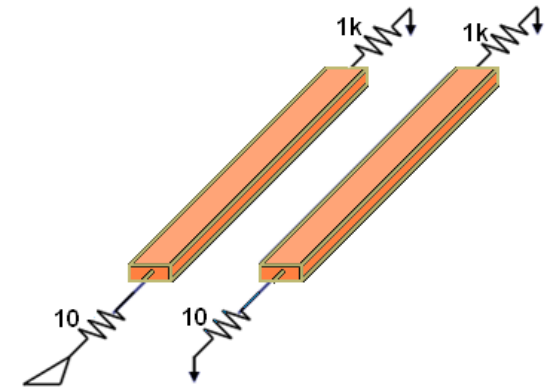
CUPLAJUL ÎNTRE LINII LUNGI

- Conexiuni “scurte” (d.p.d.v. electric): cuplajul poate fi modelat utilizând elemente concentrate de circuit
- Conexiuni “lungi” (d.p.d.v. electric): cuplajul nu mai e concentrat, ci distribuit; **fenomenele de cuplare coexistă cu cele de propagare**



➤ Cuplajul între linii scurte

- Lungime cuplaj: 100 [mm]
- Timp de creștere agresor: 10 [ns]



➤ Cuplajul între linii lungi

- Lungime cuplaj: 100 [mm]
- Timp de creștere agresor: 1 [ns]

